

Wall installed unit KWL EC 60 with heat recovery and EC-technology For single rooms, with air flows up to approx. 60 m³/h

Compact wall installed unit for single rooms.

KWL EC 60 is the proven solution for comfortable indoor climate and energy saving in single rooms. Ideal to bring existing buildings up to modern standards in the course of a renovation and to EnEV standard. KWL EC 60 supplies small and larger single rooms. For a medium-sized flat the installation of several units is recommended.

Installed in no time – ideal for renovation

KWL EC 60 is the optimal renovation solution, since a subsequent and time-consuming installation of a ventilation system is no longer required. The access to the outside air is simply made by a core drilling in the outer wall in which the wall sleeve is inserted.

This can be done simply during the facade renovation. Two protection cover plates close the openings.



The installation of the elegantly designed external fascia which is made from high grade-steel takes place with the final plastering works. During the interior work the unit is inserted into the wall sleeve and connected electrically. Only the elegant fascia is seen inside the room. Therefore the KWL EC 60 blends in everywhere beautifully and the fascia shields the view of the fan interior completely. Aluminium plate heat exchanger with efficiency of more than 70 %.

Intelligent way of energy saving

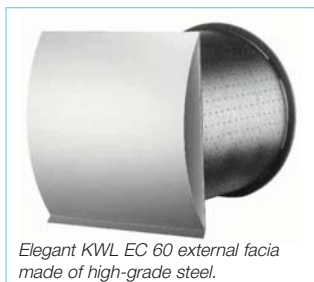
Expensive heating energy is saved with KWL EC 60 and its efficient large heat transfer area aluminium plate heat exchanger with efficiency of more than 70 %.

ECgreenVent® by Helios

Efficient energy-saving ventilation units with EC-technology including the Helios KWL EC 60 are given the GreenTec label. KWL EC 60 allows the demand ventilation with heat recovery of individual rooms; several units can be controlled independently. Regulating is not necessary.

Operating mode of the KWL EC 60 Ventilation with heat recovery

Two high efficient fans with energy-saving EC-motors move the supply and extract air. Smells and stale room air are extracted outside, fresh and preheated air is supplied into the room. The heat of the extracted air is recovered by the large heat transfer area aluminium plate heat exchanger and transferred through the plates to the incoming fresh external air, so both air flows remain separated.



KWL EC 60

NEW!



Ordering and delivery

Coordinated with the assembly steps the following elements are packed separately and have to be ordered individually:

- First fix set**, consisting of wall sleeve (length 349 mm), two protection cover plates and external fascia made from high-grade steel.

KWL 60 RS Ref. No. 0708

- Ventilation unit, optionally in Eco- or Pro- execution. See description on the right.**

Similarities

Heat exchanger

- Large heat transfer area aluminium plate heat exchanger with efficiency of more than 70 %.

Fans

Two high efficient fans with energy-saving EC-motors move the supply and extract air with minimum power consumption.

Condensation spigot

Condensation is led directly to the outside via the external fascia.

Air filter

- Two efficient air filters from micro structured electrostatically charged material of the class G4 in the supply and extract air stream guarantee the best air purity. A pollen filter (class F7) is available for the supply air as an accessory.

KWL EC 60 Eco

The energy saving solution with favourable price /performance ratio for all applications.

- Ventilation unit Eco**, consisting of indoor fascia from high quality polymer with integrated 3-speed controller.

KWL EC 60 Eco Ref. No. 9950

Speed control

Three-speed operation via controller, integrated in the indoor fascia (alternatively on top or below placeable by 180 ° rotation of the fascia). Disconnection via on/off switch on site.

Electrical connection

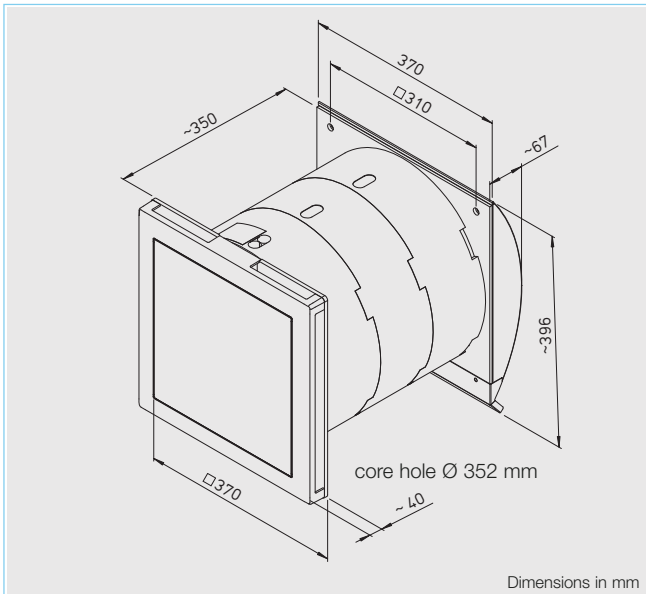
Via screwless terminals.

Technical data

	KWL EC 60 Eco		
	Ref. No. 9950		
	③	②	①
Air flow volume on speed step			
Supply/Extract V m ³ /h	60	30	17
Sound level dB(A)			
Case breakout L _{PA} in 3 m	30	22	18
Power fan 2xW	4	2	1
Noise protection D _{NE} dB(A)	39-41		
Voltage/Frequency	230 V, 1 ph., 50 Hz		
Nominal current A	0.05		
Protection to IP	X4		
Electrical connection	NYM-J 3 x 1.5 mm ²		
Wiring diagram no.	949		
Temperature operating range	- 20 °C to + 40 °C		
Weight approx. kg	12		

Wall installed unit KWL EC 60 with heat recovery and EC technology

For single rooms, with air flows up to approx. 60 m³/h



KWL EC 60 Pro / Pro FF Fulfills even highest demands in comfort, with many useful functions.

□ **Ventilation unit Pro**, consisting of indoor facia from high quality polymer and comfort controller (KWL-BCU, 1 pc. incl. in delivery). See details on the right.
KWL EC 60 Pro No. 9951

□ **Ventilation unit Pro FF**, like KWL EC 60 Pro, however with additional integrated humidity sensor for ventilation as needed. Adjustable humidity level.
KWL EC 60 Pro FF No. 9957

■ **Power control**
The comfort controller with graphic display and user-friendly menu navigation (included in delivery) makes the following functions possible:

- Four-speed manual operation or with digital timer.
- Control via intelligent CO₂- and humidity sensors (accessories, in each case up to 4 controllers can be installed).

- Supply/extract air operation separately adjustable.
- Boost ventilation, intensive ventilation.
- Display of required filter change, operating state, operating hours, error messages.
- Several units can be controlled with one comfort controller.
- Several comfort controllers can be connected to one unit.

■ **Shutters**
Two shutters seal airtight to the outside when the unit is off (holiday or downtimes), one shutter seals individually with supply or extract air operation.

■ **Electrical connection**
Via plug-in connector (incl. in delivery).

Technical data

	KWL EC 60 Pro		KWL EC 60 Pro FF	
	4	3	2	1
Incl. humidity				
	Ref. No. 9951		Ref. No. 9957	
Air flow volume on speed step Supply/Extract V m ³ /h	60	45	30	17
Sound level dB(A) Case breakout L _{PA} in 3 m	30	29	22	18
Power fan 2xW	4	3	2	1
Noise protection D _{NE} dB(A)	39-41			
Voltage/Frequency	230 V, 1 ph., 50 Hz			
Nominal current A	0.06			
Protection to IP	X4			
Electric supply	NYM-J 3 x 1.5 mm ²			
Wiring diagram no.	950			
Temperature operating range	-20 °C to +40 °C			
Weight approx. kg	12.5			

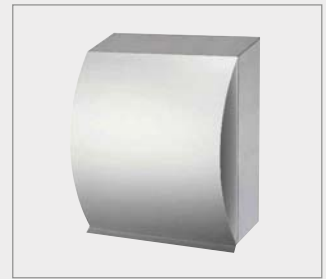
■ Similar accessories

Extension sleeve length 111 mm, can be shortened to any length, with partition element. For wall thickness > 349 mm.

KWL 60 WV Ref. No. 0884

A **compensation ring** from high-grade steel (w/o fig.) for the outside wall is available for wall thickness < 350 mm.

KWL 60 DR Ref. No. 0888



■ Ordering and delivery

Coordinated with the assembly steps the following elements are packed separately and have to be ordered individually:

□ **First fix set**, as described on the left page.
KWL 60 RS No. 0708

□ **Ventilation unit, optionally in Eco- or Pro- execution. See description on the below.**

■ **Accessories for Pro.. Comfort controller (additional)**
Display and function as described on the left. One piece KWL-BCU included in delivery. Up to 4 controllers can be connected. 3 m connecting cable included in delivery. Dim. mm (WxHxD) for flush mounting 81 x 81 x 20

KWL-BCU No. 9955

Dim. mm (WxHxD) for surface mounting 84 x 84 x 20

KWL-BCA No. 9956

■ **CO₂-sensor**
Measures CO₂ concentration and transfers data to the ventilation unit to arrange for an optimal CO₂ level in all 4 speeds. Up to 4 sensors can be plugged in. In this case, the sensor with the highest measurement is used for setting the unit. Dim. mm (WxHxD) 95 x 97 x 30
KWL-CO₂ Ref. No. 9958



■ Connecting cable

For distances > 3 m, with 2 RJ 12 plugs. For connection between controller and KWL EC 60 Pro.. and/or between several ventilation units.

KWL-AL 10 (length 10 m) No. 9444

KWL-AL 20 (length 20 m) No. 9959

■ Wye junction board

To connect units, controllers and accessory components.

KWL-ALA Ref. No. 9960

■ Additional accessories pg.

Spare filter 113